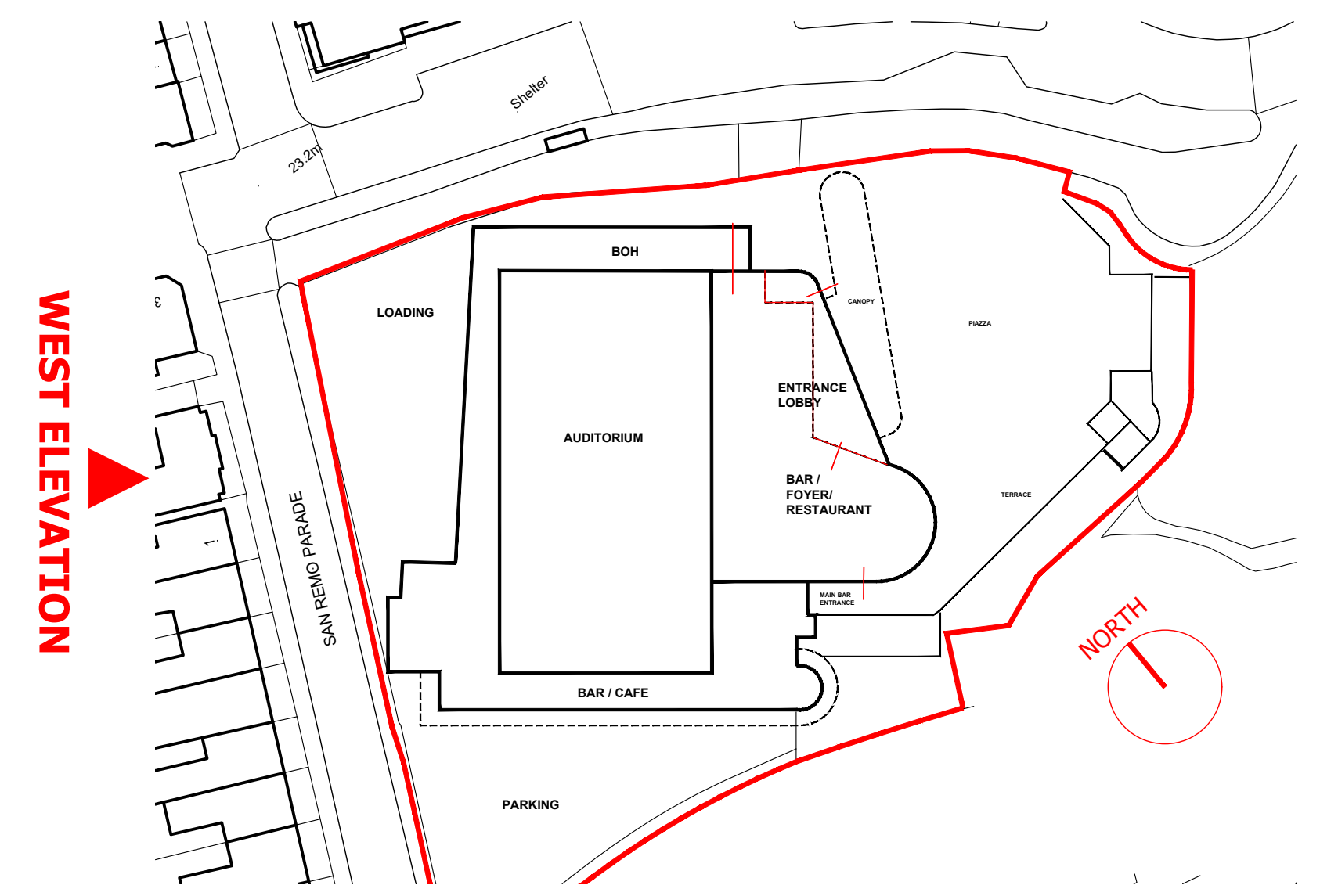


General notes
 For any other purpose other than planning, contractors, suppliers, etc. must not scale dimensions from this drawing. If in doubt ask! All dimensions should be checked on site.

This drawing is to be read in conjunction with all relevant other drawings, detailed specifications, Engineer's drawings, detail sheets and calculations. Assumptions have been made on some of the detail to existing fabric. Any discrepancies or differences to be reported back by the main contractor upon opening up.

Materials and workmanship
 Any building work to be carried out with proper materials and in a workmanlike manner in accordance with regulation 7 of the Building Regulations. The builder may show compliance with regulation 7 in a number of ways including the appropriate use of a product bearing CE marking in accordance with the Construction Products Directive (89/106/EEC) as amended by the CE Marking Directive (93/68/EEC) or a product complying with an appropriate technical specification (as defined in those Directives), a British Standard or an alternative national technical specification of any state which is a contracting party to the European Economic Area which in use is equivalent, or a product covered by a national or European certificate issued by a European Technical Approval issuing body, and the conditions of use are in accordance with the terms of the certificate.



1 PROPOSED WEST ELEVATION



EXTERNAL MATERIALS DESCRIPTION

- 01** - Monocouche Render in two tones, White (main area); and Terracotta (entrance lobby). Exact colour and spec of render TBC
- 03** - IKO Single ply membrane roof cover (dark grey) with white box gutter edge, white fascia and White Trespa Meteon panels to soffit
- 04** - Venue Signage, internally illuminated material TBC, colour Terracotta (RAL 050 60 30)
- 05** - Existing facade finishes such as render, mosaic tiles and brick
- 11** - White painted existing brickwork
- 13** - 120mm Dia Lindab Steel concealed rainwater pipes in Terracotta colour (RAL 050 60 30)

NOTE:
 Signage shown is indicative of sign and location only. Actual design of signage will be developed during detail design stage

No	Date	Revisions
T02	11/09/2023	various amendments
T01	01/09/2023	issued for tender
P01	17/06/2023	issued for planning

al3d
 PROJECTS
 DESIGN • DEVELOPMENT • DELIVERY

Unit 1 - The Hall
 High Street,
 Tetsworth,
 Oxfordshire
 OX9 7AB
 07786 855685

Copyright © 2022 al3d

Project Name and Address
Cliffs Pavilion
 Southend-On-Sea

Drawing Title
PROPOSED
 West Elevation